

# QUALITY LIFTS™

RAISING THE LEVEL OF PERFORMANCE

**UTV application**  
(shown with optional  
UTV Jack)

## Motorcycle/UTV Lift

**model# QML02E**

2,000 lb capacity  
electric/hydraulic operated  
motorcycle/UTV lift.



Available in the following colors



POWDER  
COAT  
FINISH



Look for the sign of **QUALITY**  
TOLL FREE: **877-771-5438**

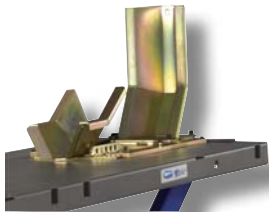
**Motorcycle application**  
(shown with optional  
wheel clamp, UTV Jack  
and side panels)

## Motorcycle/UTV Lift model: QML02E

- Precision formed platforms and scissor arms
- Integrated base for stability and smooth operation
- Electrical Hydraulic Operation
- Multiple lock positions
- Front and rear drop panel for ease of maintenance
- Solid approach ramps standard
- Available in Blue, Red or Black

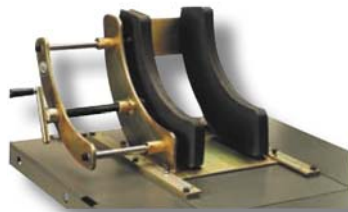
SPECIFICATIONS	Model: QML02E
Lifting Capacity	2,000 lbs.
Max Raised Height	48.5"
Lowered Height	7.5"
Platform Width	29.5"
Platform Length	86.5"
Electric/Hydraulic Power Unit	110v Power unit

### OPTIONAL ACCESSORIES:



#### QML01WC: Deluxe Wheel Clamp

- Easy rocker motion clamp wheel
- Fits standard 120 - 160 series tires



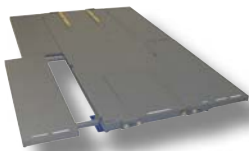
#### QML01CC: Crank style wheel clamp

- Provides additional flexibility to handle wide and narrow tires



#### QML01CJ: 1,000 lb Center Jack

- Hand operated jack for wheels free service
- Height 3.5" - 13"
- Optional: Rubber non-skid (36-9830)
- Optional: Adapter kit (37-9888)(shown)
- Deck 16" x 5.5"



#### QML02SP: UTV Side Panel Set

- Extends platform width from 29.5" - 59"
- Includes two approach ramps
- Easy to install construction



#### QML01FE: Front Extension

- Extends another 30" of usable deck



#### QML01SD: Shop Dolly

- Versatile unit for use on lift or floor
- Adjustable width 13" - 20"
- Adjustable height 12" - 15"
- Four tie down brackets

#### Portability Set

- Nosewheel (35-6770)
- Retractable wheels (35-0321)



35-0321



35-6770

#### QML01UJ: UTV Utility Jack

- Hand operated 1100 utility jack
- Height 3.5" - 13"
- Deck 23" x 5.5"



Distributed By:



TOLL FREE: **877-771-5438**

200 Cabel Street  
Louisville, KY 40206  
www.qualitylifts.com